



## the Craftsman III

### An affordable, feature rich solution

Energy efficiency, maximum utilization of interior space, and flexibility are trademarks of Phase 4 Homes by SECOR.

### This model features

- High R-value building envelope with energy efficient windows and doors
- Low maintenance exterior building products to create a variety of exterior looks
- Simple, trouble free rooflines ideal for our northern climates
- Various foundation and building construction types available
- Short construction duration time
- NYS P.E. certified design for your quality assurance

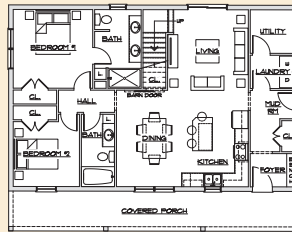
All Secor Phase 4 home designs offer ultimate flexibility by providing optional construction phases tailored to your needs. Ideal for the young adult starter home, retirement home, or lakefront cottage. Our planned expansions for additional bedroom, bath, living room, and garage spaces can meet a multitude of needs and budgets.

## the Craftsman III

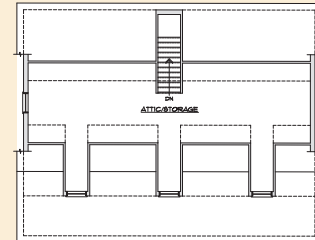
### Phase 1

Two Bedroom  
Main House  
with Porch

First Floor

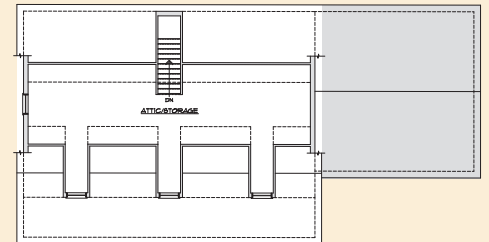
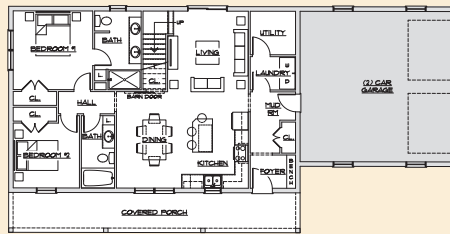


Second Floor



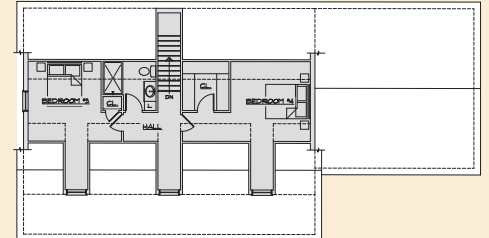
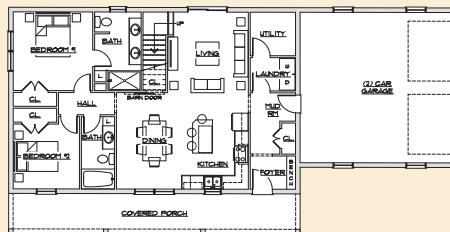
### Phase 2

+ Two Car Garage



### Phase 3

+ Two Bedrooms  
+ Third Bath



### Phase 4

+ Great Room

